

How to Setup an iPad – Out of the Box

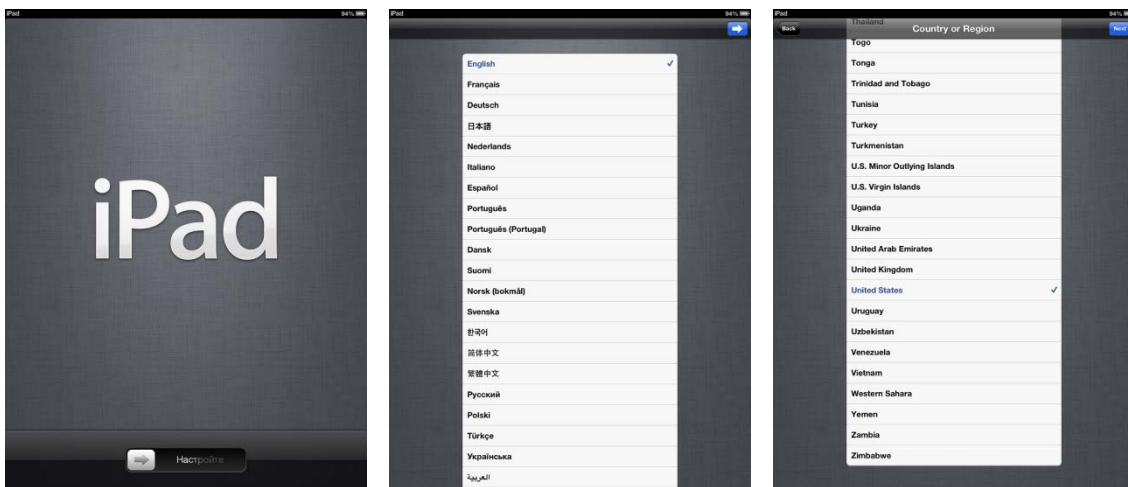
Topic: Out of the Box Setup

Product: Apple iPad

To successfully setup your new iPad, you will be required to enter your IUSD computer username and password to connect to the WiFiUSD network in order to perform the mandatory iPad activation process.

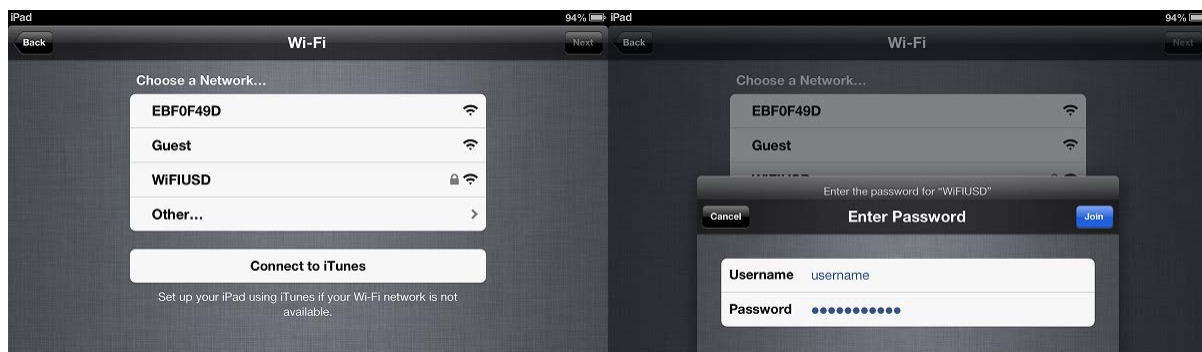
Turn on the iPad and Follow the Prompts

Once you have unboxed the iPad, power on the device by pressing the physical Lock button. When holding the iPad in a portrait orientation, the round Home button will be below the screen and the Lock button will be on the top right edge of the device. Follow the on-screen prompts to start the setup.

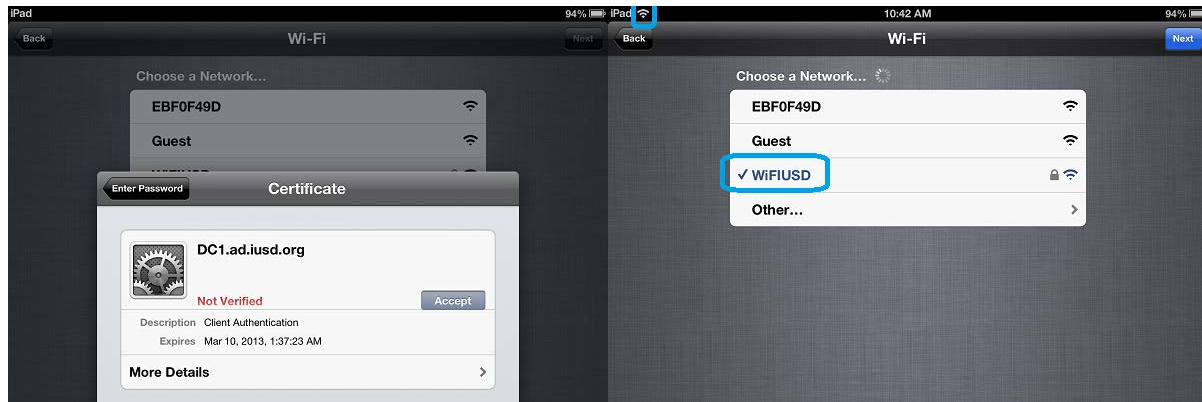


Join WiFiUSD

Apple requires the iPad to be activated during setup, so we will join the iPad to the WiFiUSD network for activation. The iPad will remember the wireless network so you will already be connected to the Internet when setup completes. Tap on “WiFiUSD” in the list of networks, and enter your IUSD computer username and password when prompted, and tap the blue “Join” button.

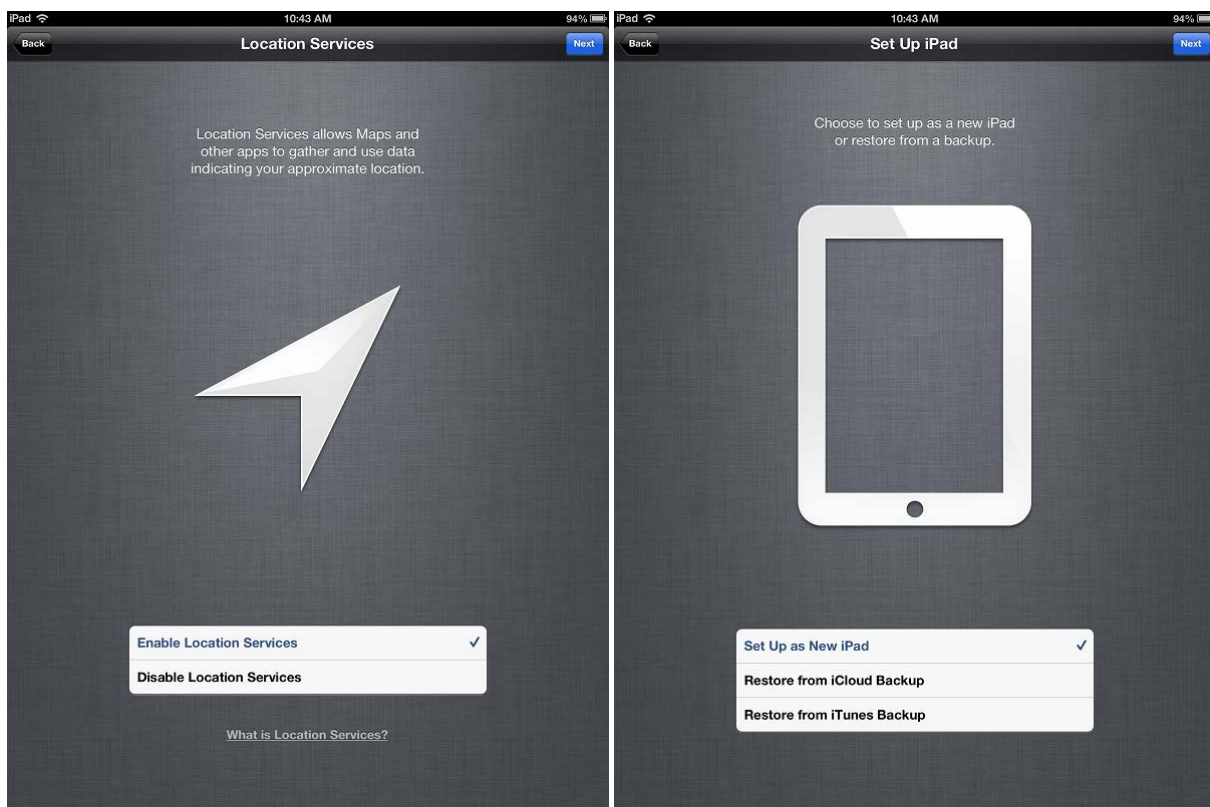


Next you will be prompted to accept a security certificate for IUSD. Tap the “Accept” button and verify your connection on the resulting screen. When the iPad has successfully connected to the WiFiUSD network, you will see a checkmark next to the “WiFiUSD” network name, and the WiFi signal indicator in the top left corner of the screen. Tap “Next” to continue.



Location Services and New Setup

You are free to enable the location based services of the iPad, as some applications use this to enhance usability. Make your selection, tap “Next” and on the next screen, tap the “Set Up as New iPad” option.



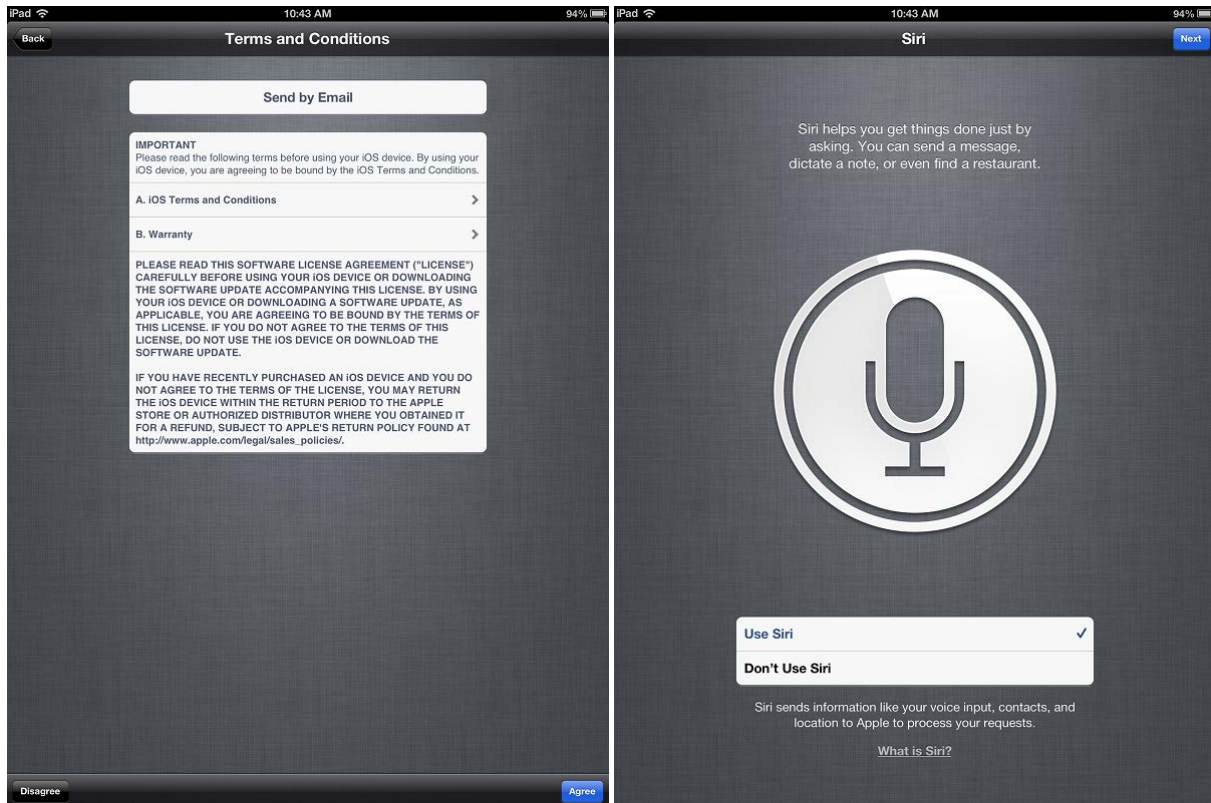
SKIP Apple ID Sign In

To reduce confusion and conflicts, IUSD recommends that you skip this step to sign in with your IUSD Apple ID. Tap the link at the bottom of the screen to “Skip This Step” and proceed to tap the “Skip” button on the resulting prompt.



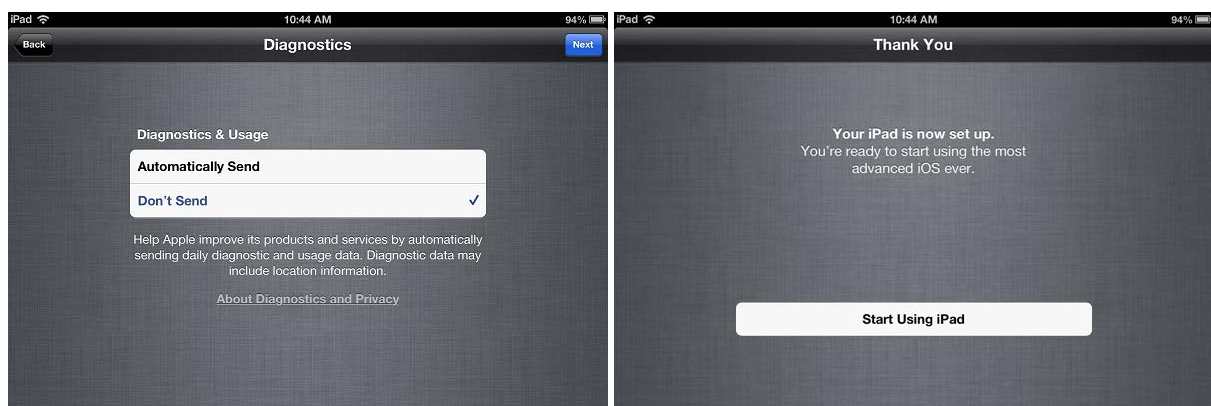
Terms and Siri

To continue through the setup, accept the Terms and Agreement by tapping “Agree” button at the bottom right of the screen. You can then select to enable Siri which is Apple’s voice directed assistant. Tap your selection and tap “Next” to continue.



Final Steps

Apple requests to collect usage statistics and diagnostics information automatically, but you can opt out of this feature if you would like. Tap your selection and then tap the final “Next” button.



Tap the “Start Using iPad” button and you will be taken to your iPad’s Home screen. You should already be connected to the WiFiUSD, and can check for the WiFi signal indicator in the top left corner. You are ready to begin using your iPad.