

State/Federal Reporting

2018-19 Quick Reference

R	D	A	S	H	B	O	A	R	D
D	E	A	D	L	I	N	E	S	A
L	D	P	A	L	C	A	P	T	T
C	D	R	O	S	D	T	Q	A	A
F	A	G	G	R	E	G	A	T	E
F	T	E	A	M	T	I	R	E	G
S	T	U	D	E	N	T	S	P	L
A	N	A	L	Y	Z	E	F	E	D


High School Principals Meeting


September 13, 2018


State and Federal Reporting: (California Longitudinal Pupil Achievement Data System – **CALPADS**) and California Basic Educational Data System (**CBEDS**)

Upcoming Deadlines

1. **10/15/2018** – School Information Form (SIF) - CBEDS
2. **11/02/2018** - CALPADS-Fall1 – Census Day (First Wednesday of October)
 - Local Control Funding Formula (LCFF)
 - Current Year Enrollment
 - Graduates and Dropouts from prior year (State Seal of Bi-literacy, Golden State Seal, UC/CSU...)
 - Immigrant Count
 - English Language Acquisition Status
 - Free and Reduced
3. **01/25/2018** - CALPADS-Fall2
4. **08/02/2018** – CALPADS EOY1, EOY2, and EOY3
5. Other deadlines and private previews throughout the year

 We report as a district. If one school fails to validate its data, the **district will fail**.

 Non-certification of CALPADS data results in zero student counts for state reporting, zero funding, no SARC pre-population, ineligible to apply for grants.

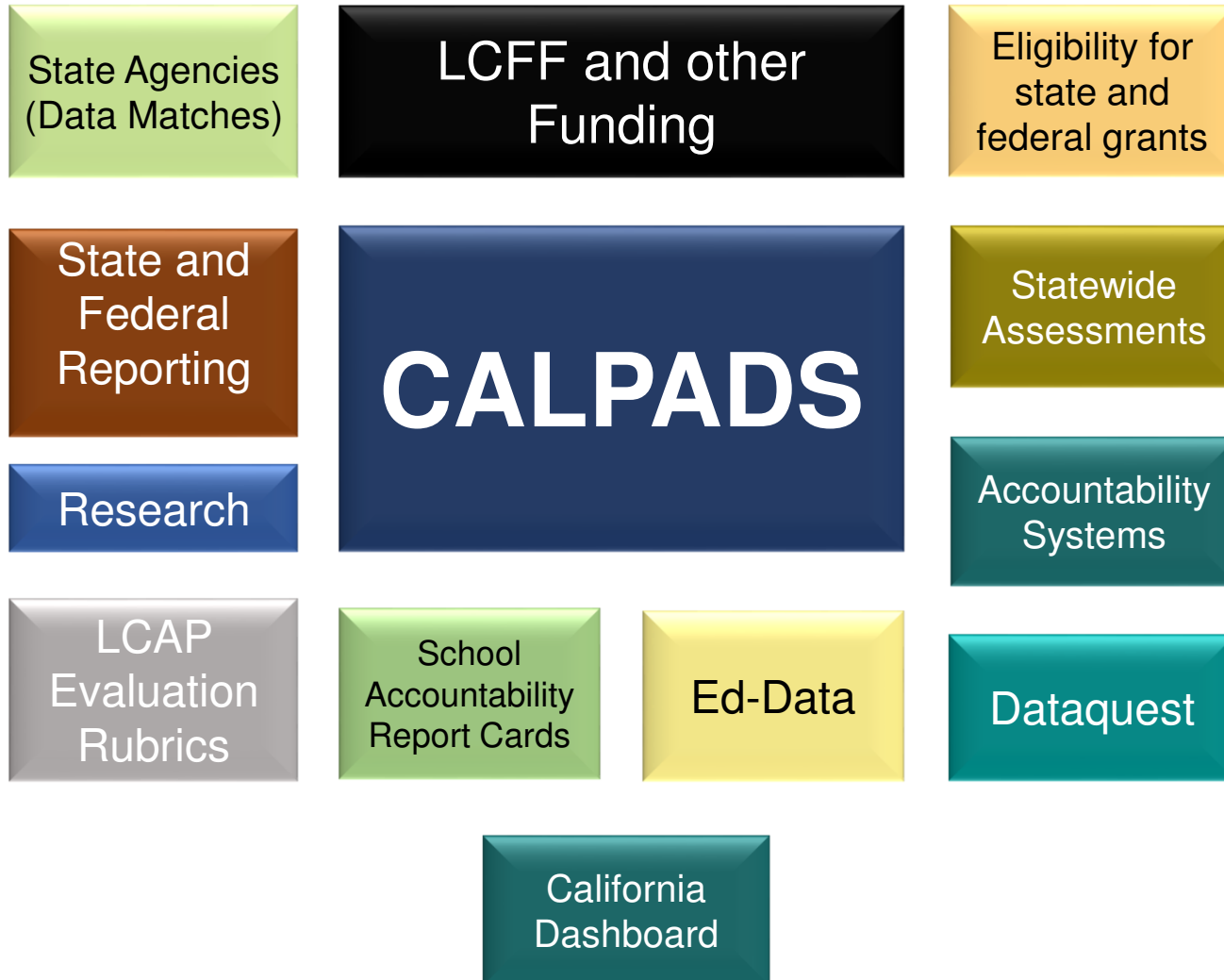
 Allow staff sufficient time to complete the tasks and perhaps cross-train staff. Some tasks can take hours to resolve for one student.

 Once data is certified at the district level, it cannot be altered.

 Information is harvested by Dataquest and other entities for their perusal.

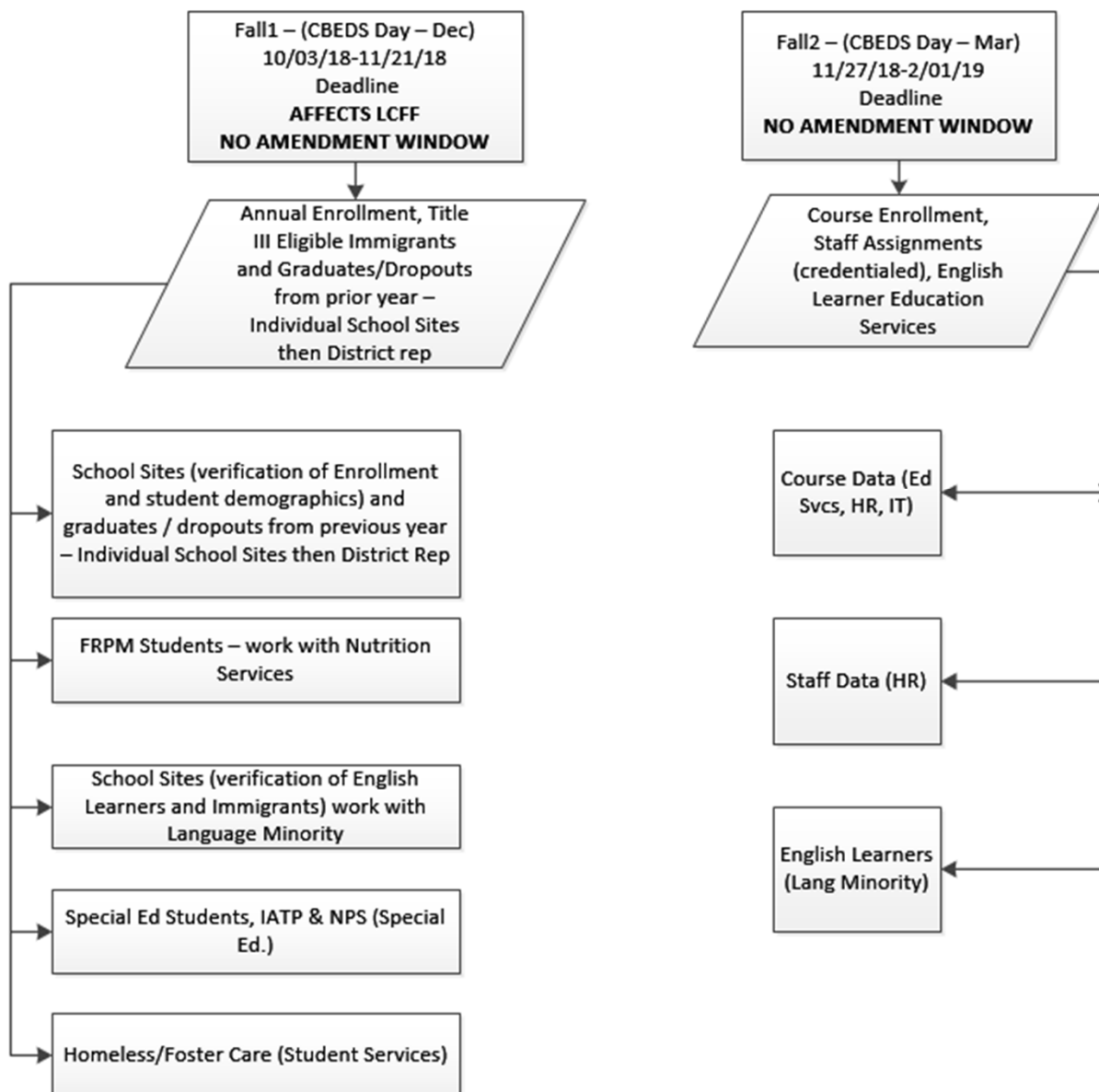
 Data will be on the California Dashboard.

How CALPADS Data are Used



Submissions to CALPADS

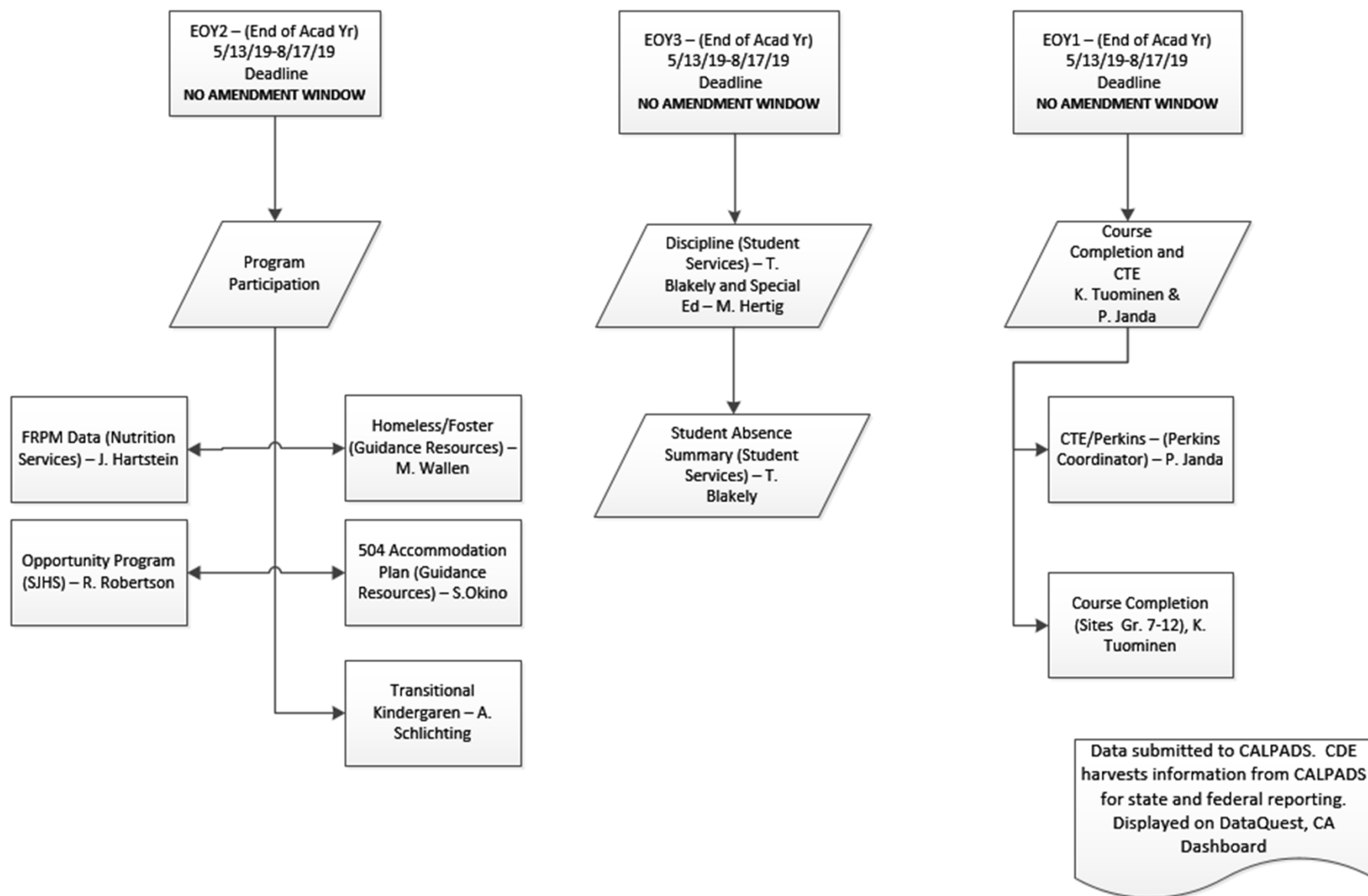
CBEDS day is
The first Wednesday of
October
October 3, 2018



CDE harvests information from CALPADS for state / federal reporting. Displayed on DataQuest, CA Dashboard. Other data is submitted via CBEDS-ORA

Submissions to CALPADS

CBEDS day is
The first Wednesday of
October
October 3, 2018



C
A
L
P
A
D
S

R
E
P
O
R
T
S

Fall1

- 1.3 – Enrollment – Primary Status Disaggregated
- 1.6 – Graduate and Dropouts by Subgroup (previous academic school year)
- 1.9 – Completers and Dropouts – Count (previous academic school year)

Fall2

- Human Resources and Language Development Departments

EOY3 – Discipline / Cumulative Enrollment

- 1.21 – Cumulative Enrollment Count
- 7.1 – Discipline Incidents – Count by Most Severe Offense
- 7.3 – Discipline Actions – Count
- 7.4 – Discipline Actions – Count by Offense
- 7.6 – Discipline Actions – Persistently Dangerous Offense Expulsions
- 7.7 – Discipline Removals for Students with Disabilities – Count
- 7.8 – Unilateral Removals for Students with Disabilities – Count
- 14.1 – Student Absenteeism - Count

EOY2 –Program Participation

- 5.4 – Homeless Students Enrolled

EOY1 – Course Completion / Career Technical Education

- 3.9 – Course Sections Completed – Count by Content Area for Departmentalized Courses
- 3.14 – CTE Concentrators and Completers – Count by Pathways
- 3.17 – CTE Non-Concentrators – Count by Industry Sector

CBEDS report has a very short window – 3 weeks. Due by October 15, 2018

CBEDS: School Information Form (SIF)

October 2018 California Basic Educational Data System (CBEDS). California Department of Education.

Created (5/11/2018).

School Information

Please provide the district name, school name, and school's County-District-School (CDS) code.

District Name	School Name	CDS Code
Irvine Unified		

Administrator's Signature:	
----------------------------	--

****CALPADS Reports may change – Complete overhaul of system mid-September 2018**



Academic Year:	2017-2018
View:	Snapshot

Email communication will have a subject line similar to the illustration below



****Req Sig** UHS – CALPADS Fall1**

How CALPADS Data are Used and Consequences

The data certified in the CALPADS Annual Submissions are used for many purposes, including funding calculations for various State and Federal programs. The data maintained in the CALPADS Operations Data Store (ODS) are used for many purposes including accountability metrics and statewide assessment registration.

Certified Data			
Annual Submission	State or Federal	State/Federal Data Usage	LEA Impact if Not Certified
Fall 1: Current Year enrollment counts Prior Year Grads & Dropouts Immigrant counts Free and reduced meal eligibility counts FRPM/EL/Foster Unduplicated Count English Language Acquisition Status	State	DataQuest (current year official enrollment, prior-year Graduates, Dropouts)	0 counts on DataQuest
		Unduplicated Pupil Count (UPC) for Local Control Funding Formula (LCFF) supplemental and concentration grant calculations	0 counts & 0 funding
		Free and Reduced Price Lunch Eligibility counts used in various grant applications	0 counts for grant applications
		Long-term English Learner calculations	0 counts on DataQuest
		School Accountability Report Card (SARC)	No SARC pre-population
		Department of Finance for budget projections	0 counts
		To respond to lawsuit and audits	0 counts
		To address requests from policy makers, researchers, and other entities	0 counts
	Federal	Title I and Title II	0 counts & 0 funding for COEs and Direct Funded Charter schools
		Consolidated State Performance Report (CSPR)	0 counts
		Title III Limited English Proficiency Program	0 counts & 0 funding
		Title III Immigrant Program (SNOR)	0 counts & 0 funding
		Titles VI & IX reports for the Civil Rights Act of 1964	0 counts
		Individuals with Disabilities Education Act (IDEA)	0 counts
	Both	Various U.S. Department of Education (ED) organizational websites	0 counts
		Eligibility to apply for various state and federal grants (especially those based on counts of economically disadvantaged students)	0 counts and ineligibility to apply for grants
Fall 2: Staff assignments Student course enrollments English Learner services	STATE	DataQuest (Teacher Counts, Course Enrollments, and EL Services)	0 counts
		CCR Title V, Section 97 (certificated staff)	0 counts
		Monitoring for English Language services	Increased potential for monitoring
	Federal	Consolidated State Performance Report (CSPR)	0 counts
		Quality Education Investment Act (QEIA) funding	0 counts & 0 funding

How CALPADS Data are Used and Consequences

EOY-1: Course completion Career Technical Education (CTE) concentrators and completers	State	DataQuest - Course Completion, Career Technical Education (CTE)	0 counts
		CTE Incentive Grant	0 counts & 0 funding
		California School Dashboard – College/Career Indicator	Potential Orange Indicator
	Federal	Carl Perkins E-1 Reporting (CTE Participants, Concentrators and Completers)	0 counts & grant eligibility
EOY-2: Program participation Homeless an TK enrolled counts	State	DataQuest (Programs and Homeless)	0 counts
	Federal	Elementary and Secondary Education Act (ESEA) Title 1, Part A Neglected	0 counts & grant eligibility
		EDEN (Education Data Exchange Network) Reporting	0 counts
		Consolidated State Performance Report (CSPR)	0 counts
EOY-3: Student discipline Cumulative enrollment Chronic absenteeism	State	DataQuest – Suspension and Expulsion	0 counts
		DataQuest – Chronic Absenteeism	0 counts
		DataQuest – Cumulative Enrollment	0 Counts and impacts suspension and chronic absenteeism rates
		California School Dashboard – Suspension and Chronic Absenteeism Indicators	Potential Orange Indicator
	Federal	EDEN (Education Data Exchange Network) Reporting	0 counts
		Consolidated State Performance Report (CSPR)	0 counts
		Individuals with Disabilities Education Act (IDEA)	0 counts
Operational Data Store (ODS) Data			
Accountability	State	California School Dashboard – English Learner Progress Indicator	Data are pulled from the ODS at announced times and used for these purposes.
		California School Dashboard - Student Demographic and Program Participation Data to determine student groups for academic indicators and all other indicators	
		School Accountability Report Card (SARC)	
	Federal	California School Dashboard and federal accountability – student enrollment/exit data to calculate the four-year graduation cohort rate and determine students who were continuously enrolled	Missing registration and inaccurate aggregates.
California School Dashboard and federal accountability – student demographic and program participation data to determine student groups			
Assessments	State	California Assessment of Student Performance and Progress (CAASPP) Smarter Balanced interim and summative assessment registration	
		English Language Proficiency Assessment for California (ELPAC) pre-identification and to validate eligibility for testing	
		Science CAASPP assessment pre-identification	

Most Common Exit Reasons for Graduates/Completers and Dropouts

Code	Description	Dropout	Graduate	Completer
120	Special education certificate of completion: A student with exceptional needs (having an individualized education program [IEP]) left school after receiving a certificate or document of educational achievement or completion meeting the requirements of Education Code Section 56390.			X
140	NoKnownEnrollTruant: The student, age six up until age 18, is truant as defined by <i>Education Code</i> Section 48260 (a), and: (1) has been referred to a local or county School Attendance Review Board (SARB) by the local educational agency (LEA) after the LEA has taken all statutory truancy intervention steps; or (2) cannot be located by the LEA after the LEA has completed a full investigation as to the whereabouts of the student.	X		
300	ExpellNoKnownEnroll: Student left school after being expelled, was subsequently referred to another educational service institution, but never showed up, and attempts to locate the student were unsuccessful	X		
320	Received a High School Equivalency Certificate (and no standard HS diploma): The student withdrew from/left school and the district has acceptable documentation that the student received a High School Equivalency Certificate by passing one or more of the following exams: the General Educational Development (GED) exam, the Test Assessing Secondary Completion (TASC) exam, or the High School Equivalency Test (HiSet). Student must be at least 18 years of age.		X	
330	Passed CHSPE (and no standard HS diploma): The student left after passing the California High School Proficiency Exam (CHSPE), and the district has acceptable documentation. Student must be at least 16 years of age.		X	X
400	OtherOrUnknown: The student is 18 years old or older and has been absent from school for reasons that cannot be determined or for reasons other than those described in the Student Exit Category codes.	X		

Reminders

- CALPADS is a longitudinal data system recording data by academic school year (July 1st to June 30th).
- Deadlines are determined by the State or Federal Government. We create timelines in an attempt to best accommodate department and site schedules – at times, the short reporting windows require extra demands on all staff.
- CALPADS support **ALL** public schools (student, staff and course data). At times, the system gets overwhelmed. This translates to downtime that impedes our performance.
- We will communicate changes that you and/or your staff need to be aware of.
- Data is pulled from CALPADS at various times throughout the academic school year.
- Once data is certified, there will be **NO** amendments.
- CALPADS is going through a complete system overhaul later this month. Reports may change slightly.
- Allow staff sufficient time to complete the tasks and perhaps cross-train staff. Some tasks can take hours to resolve for one student.
- **Terri Martz**, 949-936-5165 or **Armida Flores**, 949-936-5156.