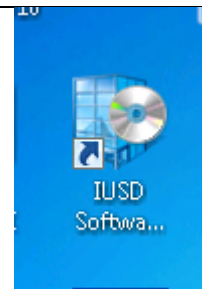


How to: Install a User-Based Application

Applications are no longer a pushed out resource, they are part of our self-service portal. This portal is designed to empower our users so they do not need to have a reliance upon IT to install a resource. This allows increased response time and gives a repository for applications so it is no longer needed to go online to find a resource.

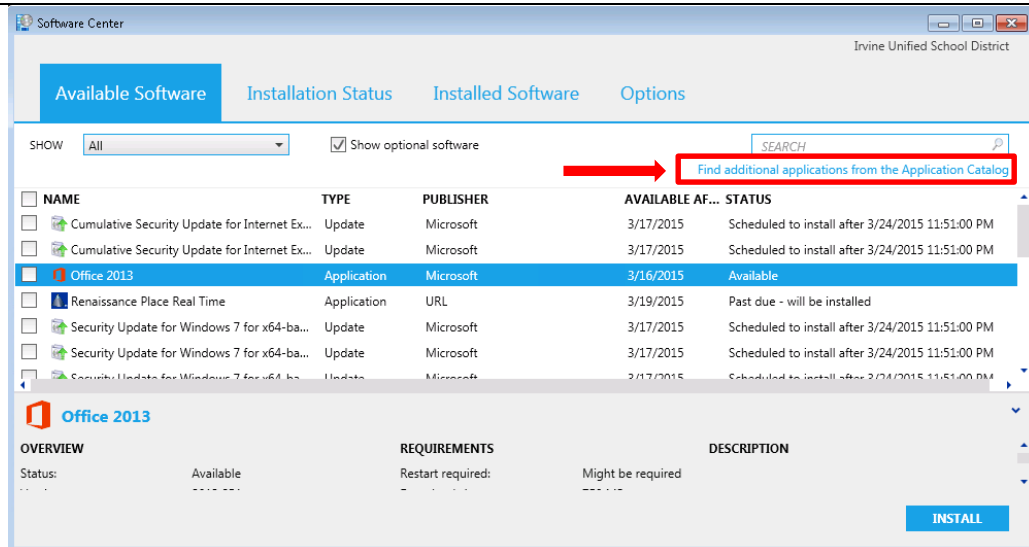
To Begin:

- Open Software Center from your desktop



Next:

- Click on “Find additional applications from the Application Catalog”

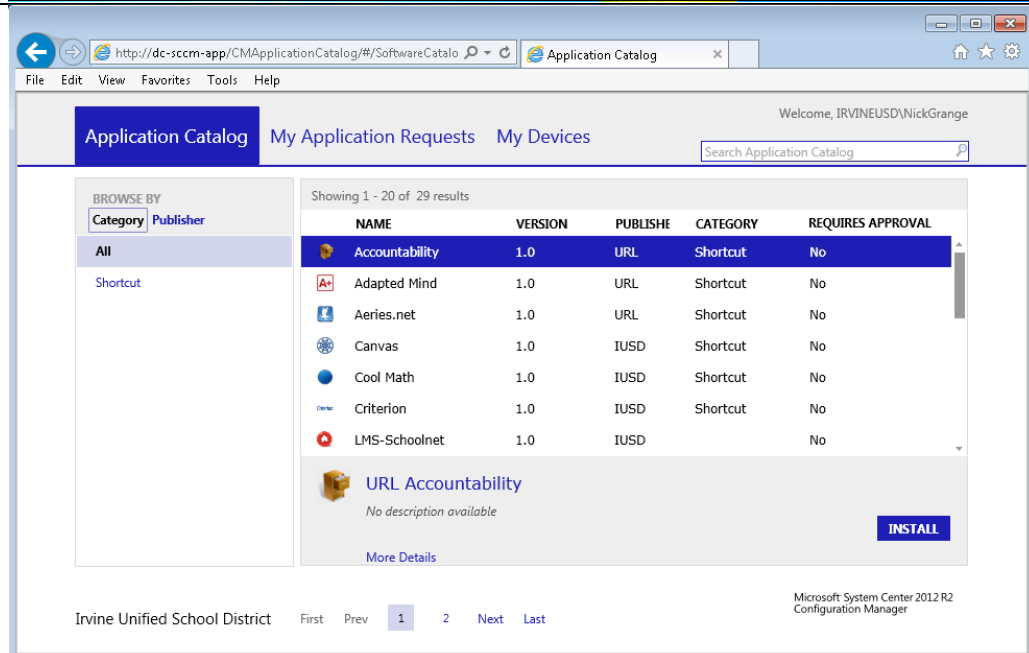


Next:

- Select which Application you want to install

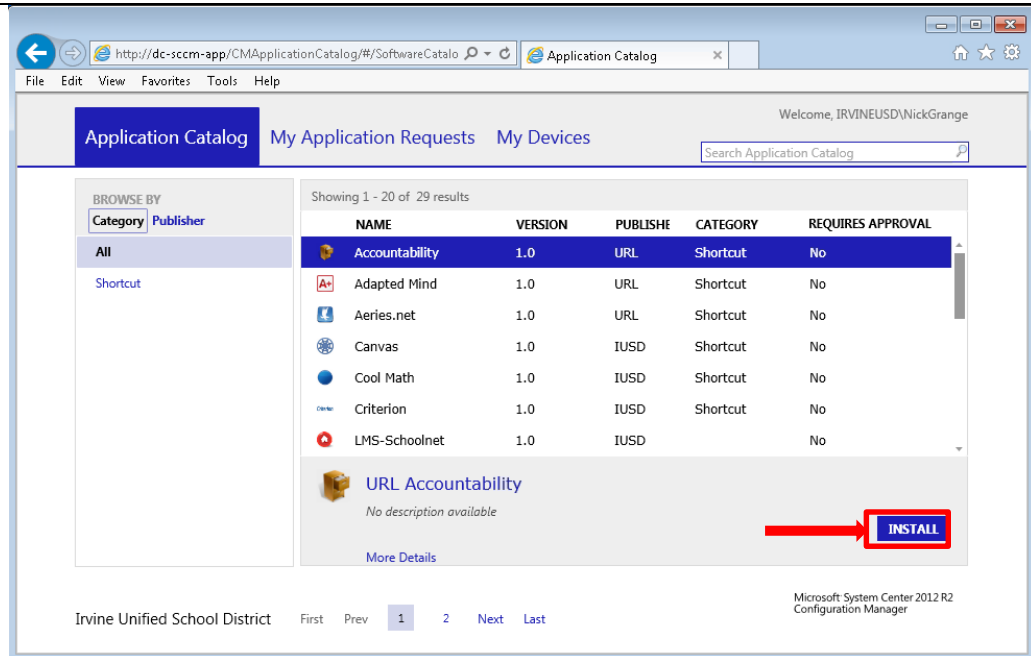
NOTE:

Under the category and publisher section, we are going to start to sort applications by their purpose, and who created them. This will help to find applications later as the catalog gets populated.



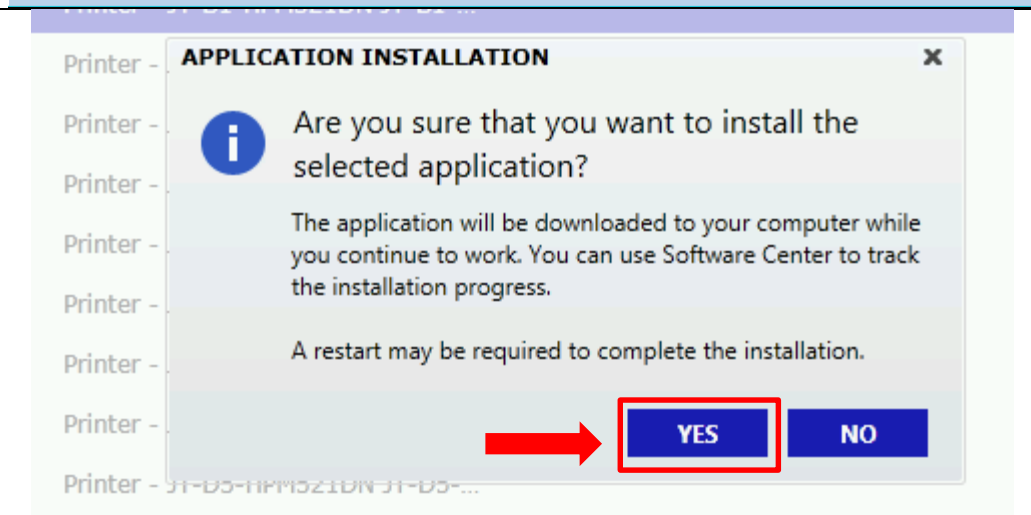
Next:

- Click the install button



Next:

- Click "Yes" to install the Application



<p>Complete: After a few seconds, the icon should now appear on your desktop. If you have any problems, please contact helpdesk@iusd.org</p>	
--	--

